

Missouri Native Plant Society

July

- 14 Mon., 7:00 PM **President Nadia Navarrette-Tiddall will give an introduction to Native Cool Season Grasses** at the Chapter Meeting. Held at the Unitarian Universalist Church, 2615 Shepard Blvd.
Columbia
- 20 Sunday **Trip to Paint Brush Prairie.** For more information call Paula at 573-474-4225.
Kansas City
- 21 Mon., 6:00 PM **Master Gardener's Program.** Held at Missouri Department of Conservation, Meeting Room, South end of 2nd Street. Osage Plains Chapter Meeting begins at 7:00 PM.
Clinton
- 23 Wed., 7:30 PM **Bruce Schuette, Department of Natural Resources, Cuiver River State Park** will present the Chapter Meeting program. Held at Powder Valley Conservation Nature Center, 11715 Cragwold Road, Kirkwood (off Geyer Road, between Watson and Big Bend).
St. Louis

August

- 1 Fri., 7:30 PM **Dorothy Cole** will present the Chapter Meeting program. Powder Valley Conservation Nature Center, 11715 Gragwold Road, Kirkwood (off Geyer Road, between Watson and Big Bend). **Note: Change of date.**
St. Louis
- 18 Mon., 6:00 PM **Master Gardener's Program.** Held at Missouri Department of Conservation, Meeting Room, South end of 2nd Street. Osage Plains Chapter Meeting begins at 7:00 PM.
Clinton



MONPS Field Trip

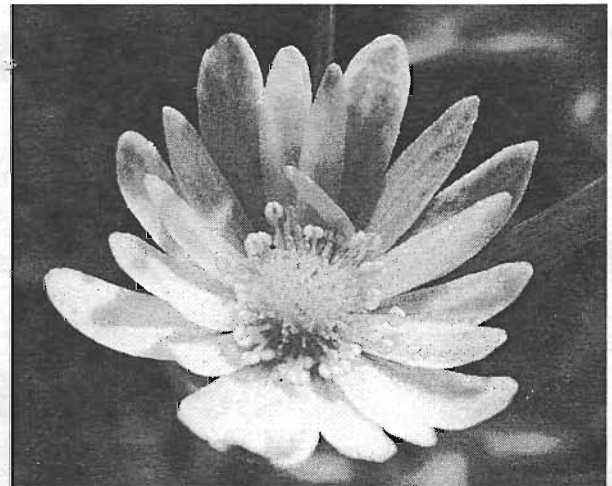
By Betty Walters

Springfield, MO. Members were greeted by the proverbial perfect spring day Saturday, April 26, 2003, as we arrived at our first stop, Woods Prairie, Mt. Vernon. Kudos to the Ozark Regional Land Trust and its volunteers for their exemplary efforts in managing this site.

Next, we worshipped, errr...were on our hands and knees photographing the *Geocarpon minimum*, a federally listed endangered species, growing along the shallow moist sandy depressions of the Halltown Glade.

Following a leisurely tree-shaded picnic lunch at the Chesapeake Fish Hatchery, we visited the Nathan Boone State Historic Site, Greene County, where MDC employees guided us to a flourishing population of Missouri bladderpod, *Lesquerella filiformis*, in brilliant yellow bloom.

Many thanks to Tim Smith for planning this trip, Jay Raveill for arranging our hotel accommodations, and Mike Skinner and John Oliver for their photographs.



Anemone caroliniana Photo by John Oliver

Missouri's Most Economical Membership!

By Jack H. Harris

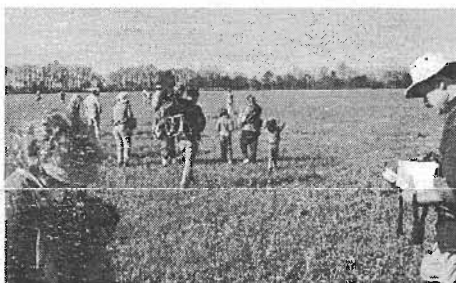
Where can one find the opportunity to purchase a year membership in a 24-year-old statewide organization for the tidy sum of \$10? Only at the Missouri Native Plant Society!

Among the many benefits of Society membership are receipt of six newsletters (*Petal Pusher*), one journal (*Missouriensis*), and the opportunity to participate in any of three botany field trips scheduled at a statewide level by the Society each year. And for an even tidier small additional sum of \$5 or \$6, or less, the opportunity to join one of five Chapters across the state, to go on more frequently scheduled local field botany excursions, attend general information meetings, plant sales, and join in a variety of activities of mutual botanical (native plant) interest.

The Society's annual membership period runs from 1 July to 30 June. All present members should check the mailing label for their individual dues status. The eight digit number at the top of the label tells all about the expiration date of your membership: the first four digits are the year, the next two digits the month, and the last two digits the day of the month. Therefore, all labels that have the number 2003 06 30 will represent an expired membership as of 1 July 2003.

To facilitate and remind members to send in their dues, the Society has mailed a pre-addressed envelope to all members with the ominous number 2003 06 30 on the label.

Please send membership dues to Missouri Native Plant Society, Treasurer, P. O. Box 20073, St. Louis, MO 63144-0073. Make checks payable to Missouri Native Plant Society. Contributions beyond the nominal dues are gratefully accepted, will be invested in programs to support the goals of the Society, and are tax deductible to the extent allowed by law.



Woods Prairie
Photo by
Mike Skinner



Halltown
Glade
Photo by
Mike
Skinner



Nathan Boone
State Historical
Site
Photo by Mike
Skinner

Dixieland Prairies and Glades

By James C. Trager, Ph.D., Shaw Nature Reserve

During the period 2-7 June, I was invited by the Entomology Museum of Mississippi State University to accompany my entomologist colleagues in their studies on the blackland prairies of Mississippi and the glades of Bibb County, Alabama. The entomology was fun, of course, but I couldn't help but botanize, as well.

The blackland prairie occurs in a large crescentic area stretching from north central Mississippi to west central Alabama, in a disjunct patch in east central Arkansas, and in smaller patches in Texas, Oklahoma, Louisiana and Georgia. During the drier, cooler climes of the last glaciation, prairie apparently occupied at least these parts of the greater Gulf Coast region, and perhaps expanded beyond them. In the pre-human era, these grasslands supported a rich fauna of large mammals, including mammoths, several species of horses, and some formidable predators. As the glacier retreated, and humans arrived with their fire-hunting practices, the mammals didn't fare well, but these southern refugia served as sources for colonization of the northern parts of today's tallgrass prairie region by much of its characteristic plant and insect life. In addition to the long list of plant species in common, detailed studies of moths, beetles and other groups demonstrate strong connections between the insect fauna of the eastern Great Plains and that of the blackland prairies.

The blackland prairie remnants of today are few, since all the deeper soil parts were converted, first to cotton agriculture, and now to growing soybeans. The existing remnants are the most xeric, shallow-soil patches, i.e. those not suitable for plowing. They overlie deep cretaceous chalk deposits, which are exposed in eroded areas as grayish "moonscapes." The first European settlers to the area noted these chalky gullies as natural features of the blackland prairies, but today they often serve as convenient (illegal) roadside dumps. The grassy areas between them have gone unmanaged and for decades and now sport healthy populations of *Juniperus virginiana*. Another, somewhat surprising woody invader is *Berchemia scandens*. The conservation communities of the southern states are only just beginning to actively protect and manage their prairie sites, thus far with almost no governmental assistance.

With such shallow soil overlying a low-nutrient, calcareous substrate, one might imagine the herbaceous vegetation would resemble an Ozark glade or calcareous prairie, and indeed, this is the closest analogy among familiar vegetation here in Missouri. *Schizachyrium scoparium*, *Fimbristylis puberula* and *Dalea purpurea* and *D. candida* are dominants, occurring along with familiar *Liatris*, *Silphium*, *Coreopsis* and *Arnoglossum* species. An interesting feature in these alkaline sites is the occurrence of several

organisms characteristic of more acidic sites in the Ozarks, e.g., *Liatris squarrosa* and the ant *Paratrechina arenivaga*, the latter strictly a sand inhabitant in Missouri. Strangely absent from the blackland prairie remnants I visited was any hint of *Echinacea*, but I was told that *E. purpurea* (and several plants more typical of mesic prairies) occur in abundance at a site I was unable to visit called Chickasaw Prairie.

The Bibb County, Alabama glades occur in a geologically complex environment of the Cahaba River drainage, which reminded me a bit of our Big River in appearance and flow rate. The river has sandy, mostly gently sloping banks, supports an open riparian forest with thriving populations of *Justicia americana* and *Hymenocallis caroliniana*, and is shallow and flat-bottomed in its course. The uplands surrounding the glades are steeper than the riparian area. On the high ground and ridges, pine-bracken savannas with many interesting legumes and composites occur on the sandstone-based soils, while dense oak-pine-hickory forest occurs on the loamy, lower slopes.

The glades themselves occur on rough outcrops of chemically very pure dolomite (no silicates) and look rather unlike glades I'm familiar with here in Missouri. Woody invaders include the expected *Juniperus virginiana*, plus the quite unexpected *Pinus palustris*. The herbaceous dominants are *Schizachyrium scoparium*, and *Amsonia ciliata*, nearly half and half! There is a strong representation of an endemic, perennial variety of *Erigeron strigosus*. *Echinacea* and *Oenothera*, so characteristic of Missouri glades this time of year, were totally lacking, but other beauties, such as two *Onosmodium* species, the extraordinary pink *Spigelia gentianoides alabamensis*, purple-flowered *Dalea cahaba*, several rosinweed-like *Silphium*, and in drainages, sedges of the largely tropical sedge group *Dichromena* (now considered to belong in *Rhynchospora*). All tolled, there are six endemic species or varieties of flowering plants on these glades.

The Nature Conservancy of Alabama has recently acquired and begun a management program involving prescribed burning at the Bibb County glades site I visited. I hope to return in a few years and see the progress in the recovery of the vegetation. Another hope is that TNC will be able to address the significant invasion of the glade sites by fire ants, to the exclusion of native species. Native ants still dominate most of the surrounding areas, but fire ants have made themselves the kings of their hills in the glades.

Internet resources: Blackland prairie – <http://www.dasnr.okstate.edu/s257/south/mlra/135.htm>;

Flora of Bibb County glade – <http://www.epa.gov/grtlakes/oak/Proceedings/Allison.html>

Petals & Wings

Betty Walters, Editor



Crossing the road in front of the Shaw Nature Reserve Trail House, I hiked quickly into the west prairie. Topping the first hill, I stopped and gazed at the multitude of young grasses and forbs as I searched for milkweed. The spring day had been windy, cloudy and cold. Now, the light was fading fast as darkness approached. I knew the reserve personnel would be locking the gates soon. I had to leave.

I tried to resolve myself to the fact that although I knew they were there, I still had not seen a butterfly in flight all afternoon. Disappointed I started hiking out. When I reached the bottom of the hill, I realized I was in the middle of a patch of three feet tall *Asclepias syriaca* (Common Milkweed). Quickly, I searched the chewed leaves for caterpillars. Nothing. Not being one to give up easily, I gently pulled open one cluster of terminal leaves and happily saw my only butterfly of the day, a Monarch caterpillar in its second of five instars sheltering from the deepening chill of the oncoming night. Its black, yellow and white bands formed a clear pattern, and while the front tentacles were clearly visible, the back tentacles were only small knobs.

Monarch caterpillars, like many others in their Order and most other groups of plant-feeding insects, are resource specialists—have evolved a specialization to one or a few plant species. Further, studies of host specialization have revealed a strong tendency for phylogenetically related insect species to feed on phylogenetically related plant species. For example, both Monarch (*Danaus plexippus*) and the Queen (*Danaus gilippus*) caterpillars feed exclusively from members of the Milkweed Family (*Asclepiadaceae*: *Asclepias*, *Cynanchum* and *Matelea* species).

If you are planning, or have planted a garden to attract butterflies, consider including not only flowering plants they can feed from as adults, but plants the caterpillars need as well.

Missouri has an abundance of native plants utilized by butterfly caterpillars. A few of these are:

- *Viola* species – Great Spangled Fritillary and Meadow Fritillary;
- *Helianthus*, *Silphium*, *Rudbeckia* – Gorgone Checkerspot and Silvery Checkerspot;
- *Aristolochia tomentosa* (Dutchman's Pipe) – Pipe Vine Swallowtail;
- *Apiaceae* (Carrot Family), *Taenidia integerrima* (Yellow Pimpernel) and *Zizia aurea* (Golden Alexander) – Black Swallowtail;
- *Fabaceae* (Bean Family) – Gray Hairstreak, Eastern-Tailed Blue, Clouded, Cloudless and Little sulphurs, Alfalfa Butterfly;
- *Rhus aromatica* (Fragrant Sumac) – Red-Banded Hairstreak;
- *Asimina triloba* (Pawpaw) – Zebra Swallowtail.

For information about additional native butterfly host plants, I recommend *Butterflies and Moths of Missouri* by J. Richard and Joan E. Heitzman.

By including host plants in your garden, you can transform it from a quick fueling station to a butterfly haven, and even though you may not see them on the wing, you may find butterflies there.



Welcome to New Members

We are happy to welcome these new and returning members to the Missouri Native Plant Society. We hope you will join us soon at some of our upcoming meetings and field botany trips.

- Anne and Robert Orth, Gerald
Dr. Michael A. Vincent, Oxford, OH
Kelly Walsh, Kansas City
Kurt Odendahl, St. Louis
James Trager, Gray Summit
Karen Kramer, Jefferson City
Sarah Ruby, O'Fallon, IL
Judi Brooks, Des Peres
Kelly A. Evers, Dittmer
Joseph Hansen, St. Louis
Dr. Donald Miles,
Columbia
Wilson's Creek National
Battlefield, Republic



MONPS Chapter Web Sites

Kansas City www.angelfire.com/mo2/kcmonps/
Columbia <http://www.digmo.com/npsboco>

WWW. SITES FOR MISSOURI BOTANY

Flora of Missouri Project:
<http://ridgwaydb.mobot.org/mobot/missouri/>

OTHER SITES

KCWildlands: www.kcwildlands.org
GrowNative!: www.grownative.org
National Plant Conservation Campaign:
www.cnps.org/NPCC
Easyliving Native Perennial Wildflowers:
<http://www.easywildflowers.com>

Kansas City Chapter News

By Dan Rice, Chapter Representative

The Kansas City Chapter has had an active late winter and very full spring this year.

Our January meeting was spent planning field trips and other events for the spring and early summer. Sue Hollis then gave an excellent presentation about petal doubling, either from an evolutionary vestige or by selection for cultivars. We also held an election of officers. Sue Hollis will continue as President, Dave Alburty as Vice-President, Pam Gilford as Secretary, Ed O'Donnell as Treasurer, Dan Rice as Chapter Representative, and George Scheil as Newsletter Editor (a non-elected position).

The March meeting began with an extensive guided tour of the Discovery Center, the MO Department of Conservation's Urban Conservation Center. The building is quite impressive with recycled building materials, photovoltaic windows, and a wastewater recovery system. The parking lot islands are also designed to reduce stormwater run-off. It is a fascinating center, well worth a stop if you are in the Kansas City area.

March 29 found several members attending our first field trip of the year to the Winn Prairie in Cass County. Few plants were in bloom, but one did intrigue everyone. It was biscuitroot, *Lomatium foeniculaceum*, a member of the Umbelliferae family. Apparently the roots were ground and used to make unleavened bread by the Native Americans, as mentioned in the diaries of Lewis and Clark. It was also noted that they (Lewis and Clark) were not impressed by the "biscuits".

May 2-4 was our annual plant sale at Powell Gardens. The event was well attended, and for once the weather even cooperated!

Our last Chapter meeting for the Spring was on May 15. Professor Elmo Law of UMKC spoke on the sex lives of plants. Quite interesting, as he started with algae and ended with the vascular plants. The myriad ways plants have found to sexually reproduce is awesome!

May 19 found members visiting fellow member Ona Geishen's prairie south of Sedalia. Besides finding Paintbrush, we also saw the Grass Pink Orchid, *Calopogon oklahomensis*. This was a first for me!

Our next field trip took place on May 31. We traveled two hours north to Lamoni, IA and visited Slip Bluff Park. Our goal was to find the small white lady's slipper orchid, *Cypripedium candidum*. After some searching (and climbing), we located two nice populations. Unfortunately, we were about four days too late, as the majority of flowers were already dried. We did find one that was just past prime, with lip still a perfect white. We also discovered a very nice stand of ostrich fern, *Matteuccia struthiopteris* var. *pennsylvanica*. It was a treat for me to see this fern, because I had never seen it growing in the wild before! This is a great little park easily accessed from Interstate 35. Well worth a stop if you are in the area.



Trees of Missouri – Buy It Now!

By Pam Haverland

The *Trees of Missouri*, a new book from the Missouri Department of Conservation by Don Kurz with illustrations by Paul Nelson, is now available. The Hawthorn Chapter will be purchasing the book at a discount price. Softbound copies will be \$11.75 (regular price \$16.50), case bound copies will be \$15.25 (regular price \$21.50).

If you would like a copy, contact Pam Haverland (pamela_haverland@usgs.gov) with the number and whether you want softbound or case bound. Copies will be available at the September Board Meeting and at Columbia's Heritage Festival in September. If you would like your copy mailed, add \$3.85 for shipping and send your check to Pam, 6901 Ginlet, Columbia, MO 65201.

Editor's Note: This 400 page companion book to Don and Paul's previous collaborative effort, *Shrubs and Woody Vines of Missouri*, includes 204 species with descriptions of each tree's habitat, range and its physical characteristics. Many entries have information about trees' historical medicinal uses, their benefits to wildlife and the origins of their scientific names.

Special features, such as the illustrations displaying the reproductive cycles of oaks and hickories and a taxonomic key for different species, will help make identification easier. Advice about how to choose a tree for your site, instructions on caring for and propagating native trees, plus lists of trees with showy flowers, interesting fruit and fall color rounds out this enjoyable reference for Missouri and surrounding Midwestern residents.

Osage Plains Chapter News

The May 19 meeting was held with the Master Gardeners Class organized by Sam Angima, Agronomy Specialist, Outlook and Extension Service. Total attendance 20. The topic was Insect Identification, Biology and Control presented by Anastacia Becker, Community Food Systems and Sustainable Agriculture Program, Southwest Missouri Center, UMC. The discussion on biology and control of insects was quite informative.

On Saturday evening, July 12, 2003, 5:00 PM Ruth and Dale Jennings have invited Osage Plains Chapter for a special tour of their wildflowers and a cookout evening meal. Plan to bring dishes that will complete the meal. Two years ago we enjoyed a tour of their wildflowers and a wonderful dinner.

Our annual meeting will be Monday, September 15 with Carolyn and Bud Henzlik, slightly over two miles south of Appleton City.

Quarterly Board Meeting Highlights

26 April 2003

Springfield Conservation Nature Center

MONPS Corporate Registration Status: Our tax number remains the same. A \$65.00 one-time reinstatement fee was paid. Robin Kennedy Moved that the Vice-President in any year will be the Registered Agent for MONPS with the Secretary of State. Max Towler Seconded the Motion. The Motion passed.

Treasurer / Withdrawal / New Nomination: Jack Harris (JH) reported that the original candidate for Treasurer, Keet Kopecky, withdrew. Ann Earley Moved that Bob Siemer be nominated for Treasurer. Jack Harris Seconded the Motion. Bob Siemer was nominated for the position of Treasurer.

Treasurer's Report: JH provided a copy of the current report to all attendees (a copy is on file with the Secretary). Hudson money is in a checking account. (It does not draw interest.) JH noted that the total in the Hudson account is \$7,845 and represents a one time gift of \$5,000 from the Hudson family and donations received from others following Stan Hudson's death. JH said a CD would earn maximum interest. JH will leave money as is until June.

Publications and media: *Petal Pusher* – Betty Walters (BW): PageMaker software was purchased and registered to the Society. It is installed on BW's machine. George Yatskievych suggested that she hold onto the CD (software) for now. Pat Harris has been a great help. BW asked for more involvement from members in writing articles. Please send her material. BW would like to use more photos.

Missouriensis – George Yatskievych (GY): The 2002 issue has gone out. The next issue may be an *Atlas of Mosses* (penned by Carl Darigo); we may print more copies to distribute to bryologists. (Carl Darigo would reimburse the Society.)

www.MONPS – Robin Kennedy (RK): New brochures are up and can be downloaded as PDF files. Members are asked to check it out (make sure the files work and if not, alert RK). RK is working to get images into thumbnail format. Mike Skinner will be sending the day's field trip photos to RK.

Updated MONPS Fact Sheets – Pam Haverland (absent) and Robin Kennedy: Seventeen sets of Fact Sheets have been mailed out. All suppliers want to be on the website. JH noted that the fact sheets are the items most in demand at MONPS' booth at meetings and conferences.

Operating Manual Status – Pam Haverland (absent): JH stated that materials should be sent to Sue Hollis and Pam Haverland.

Distribution Manager: Nathan Pate has now taken care of distributing two issues of the *Petal Pusher* and the 2002 issue of *Missouriensis*. Nathan is doing a great job!

Committees & Task Forces: Membership – Ann Earley (AE): Since Dec. 2002, 22 new members have joined-including one new life member. 363 individuals or organizations receive our mailings. 326 dues paying members (including 20 life members). G Y Moved that Patty Daniel be made an honorary life member. Dan Rice Seconded the Motion. The Motion passed.

Dues (2003-2004) – Envelopes: Dues are due in June (a reminder was not put in the *Petal Pusher* this year). GY Moved that a reminder be mailed to everyone. RK Seconded the Motion. The Motion passed. The Board will follow up the mailing with a reminder in the *Petal Pusher*

Environment and Education – John Oliver (JO): JO was invited to represent MONPS at a Conservation Forum held in St. Louis. (Ann Earley also attended, representing the interests of butterflies.) Topics included-natural history programs, flora of MO, endangered species, and harmful exotics. MDC is interested in receiving additions to the exotics list, taking some land out of farming, and having a demonstration prairie. JO felt they were receptive.

Mark Twain National Forest Task Force – Paul McKenzie (PM): There has been no decision rendered on the timber sale. Paul Nelson (fire manager) has moved to planning. This is significant because of his take on management plan (hopes to input a plan to limit fragmentation, etc.). Perhaps, PM's position would be more relevant and useful, e.g. federal regulation publication coming with info on down listing of *Lesquerella filiformis*; also, perhaps it would be useful to have a task force report on different studies, e.g. from the publication SIDA a paper on *Verbena ozarkense*. GY Moved to vote to dissolve the Mark Twain Task Force and thanked Paul McKenzie for a job well done. JO Seconded the Motion. The Motion passed.

Awards Committee Status – GY Moved to approve the expenditure of up to \$400 for award plaques. John Oliver Seconded the Motion. The Motion passed.

Fund Raiser / New Design Selection / T-shirts, etc. – Sue Hollis (SH): Copies of a new design by Ann Grotjan were passed out to the Board. GY Moved to authorize Sue Hollis to move forward as discussed, with approval of expenditures up to \$2,500 for 200 shirts, and a \$200 gratuity for the artist. Nels Holmberg Seconded the motion. The Motion passed.

Election: Nominating Committee Report – Bruce Schuette: The slate of officers was published in the *Petal Pusher*, and there is one nominee for each office - no other nominations. Keet Kopecky withdrew as the nominee for Treasurer. JH introduced Bob Siemer, the new nominee for Treasurer, and Kathy Thiele, the nominee for President.

Ballot Committee Status – Robin Kennedy: As there was only one nominee per office there was no need for a ballot. The ballot committee was dissolved

ILNPS & MONPS 2005 Joint Meeting at Pere Marquette: GY Moved that the Vice-President should not be required to make arrangements for 2005 meeting. Paul McKenzie Sec-onded the Motion. The Motion Passed.

Present at Meeting: Pat Harris, Jack Harris, Nels Holmberg, George Yatskievych, Max Towler, Sue Hollis, Paul McKenzie, Ann Earley, Bob Siemer, Bruce Schuette, Tim Smith, Kim McCue, John Oliver, Betty Walters, Robin Kennedy, Dan Rice, Kathy Thiele, Ed O'Donnell.

Respectfully Submitted,
Kimberlie McCue
Secretary



“Visions of Prairie Garden”

This exhibit by Henry Domke is showing at William Woods University, Mildred Cox Gallery, Fulton, Missouri, now until July 18, 2003, and features botanical prints celebrating the Prairie Garden Trust, a nature restoration project in central Missouri. For more information and directions: www.prairiegardentrust.org parriegarden@aol.com

Nominate A Garden “Activist”

Submitted by David Mizejewski

This is a great way to recognize some of the native plant/wildlife gardeners out there.

The nomination form is only two pages.

http://www.gardeners.com/gardening/content.asp?copy_id=5342&SC=DNA70065

For further information contact David Mizejewski, National Wildlife Federation, 11100 Wildlife Center Drive, Reston, VA 20190, 703-438-6499, FAX 703-438-6468, www.nwf.org/backyardwildlifehabitat

Healthy Forests Initiative Progresses

By Emily B. Roberson, Ph.D., Director Native Plant Conservation Campaign

The Bush Administration has finalized two key regulatory components of its sweeping “Healthy Forests Initiative,” a large complex of legislation, regulation and policy changes which restrict environmental, scientific and public oversight of National Forests - ostensibly to reduce fire hazard.

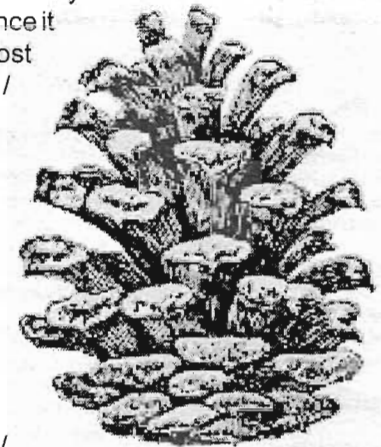
At the same time the Administration proposed new regulations to reduce protections for federally listed species on National Forests.

More information on the Healthy Forests Initiative can be found on the Forest Service web site: <http://www.fs.fed.us/projects/HFI.shtml> ACTION

Interested parties may write your elected representatives and share your opinions on the Healthy Forests Initiative and on the Administration's policies on science, public input and the environment. Find contact information for your House and Senate representatives by going to www.congress.org and entering your ZIP code.

The scientific and conservation communities have voiced strong opposition to the Healthy Forests Initiative (HFI) since it was first announced. Most recently, a Greenpeace / National Forest Protection Alliance report has been released reviewing the scientific and policy flaws in the HFI. Prof. E. O. Wilson authored the foreword to the report. The report can be viewed at:

<http://www.greenpeaceusa.org/features/endangeredforests.htm>



INFORMATION ON JOINING MISSOURI NATIVE PLANT SOCIETY

SOCIETY DUES

(Chapter dues additional)
 Student \$5.00
 Regular \$10.00
 Contributing \$20.00
 Life \$200.00

CHAPTER DUES

Columbia \$6.00
 Jefferson City \$5.00
 Kansas City \$5.00
 Osage Plains00
 St. Louis \$5.00

(Circle all that apply)

Do not publish my name and address in the membership list.

Make check payable to: Missouri Native Plant Society

Mail to: Missouri Native Plant Society
 PO Box 20073, St. Louis, MO 63144-0073

Name _____
 Street _____
 City, State _____
 9 digit Zip _____ Phone _____
 e-mail _____

Vol. 18 #4
July - August 2003

Inside This Issue

- Please Pay Membership Dues
- Field Trip Photographs
- Dixieland Prairies and Glades
- *Trees of Missouri* Is Available Now

Missouri Native Plant Society
P.O. Box 20073
St. Louis, MO 63144-0073

Non-Profit
Organization
U.S. Postage
PAID
St. Louis, MO
Permit No. 1720

ADDRESS SERVICE REQUESTED

90000000
REX & MARTHA HILL
4 GRANTWOOD LN
ST LOUIS, MO 63123-2052

PRESIDENT

Kathy Thiele
4 Rodelle Woods
Weldon Spring, MO 63304
635-300-9290
thiele6336@aol.com

VICE-PRESIDENT

Jay Raveill
Biology Department
Central MO State University
Warrensburg, MO 64093
660-543-8812 (w)
jar8812@cmsu2.cmsu.edu

SECRETARY

Kimberlie McCue
MO Botanical Garden
PO Box 299
St. Louis, MO 63166
314-577-9497
kimberlie.mccue@mobot.org

TREASURER

Bob Siemer
74 Conway Cove Drive
Chesterfield, MO 63017
636-537-2466
rivis42@prodigy.net

IMMEDIATE PAST PRESIDENT

Jack Harris
9708 Green Park Rd.
St. Louis, MO 63123
314-894-9021
jahar@mac.com

Missouri Native Plant Society Officers and Board Members

BOARD MEMBERS

Pam Haverland ('02-'05)
6901 Ginlet Lane
Columbia, MO 65201
573-443-2189
pamela_haverland@usgs.gov

Paul McKenzie ('00-'05)
2311 Grandview Circle
Columbia, MO 65203
573-445-3019
paul_mckenzie@fws.gov

Robin Kennedy ('02-'05)
300 Westwood Ave.
Columbia, MO 65203
573-443-5625
KennedyR@missouri.cio

John Oliver ('01-'04)
4861 Gatesbury Dr.
St. Louis, MO 63128
314-487-5924
joliver02@earthlink.net

Bruce Schuette ('01-'04)
678 St. Rt. 147
Troy, MO 63379
636-528-7247 (w)
baessch@nothnbut.net

Max Towler ('02-'05)
7906 Hwy 23 N
Eureka Springs, AR 72631
501-253-8137
max@nwaf.com

ARCHIVES

George Yatskievych
See *Missouriensis*

ENV. AND EDUC.

John Oliver
(see board members)

FIELD BOTANY

Tim Smith
1704 W. Main
Jefferson City, MO 65109
573-635-8085
smitht2@mdc.state.mo.us

MEMBERSHIP

Ann Earley
1425 Bobolink Pl.
St. Louis, MO 63144-1128
314-963-0103
aee623@prodigy.net

PUBLICITY

Vacant

MISSOURIENSIS, CO-EDITORS

George Yatskievych
MO Botanical Garden
PO Box 299
St. Louis, MO 63166
314-577-9522 (w)
george.yatskievych@mobot.org

Doug Ladd
The Nature Conservancy
2800 S. Brentwood Blvd.
St. Louis, MO 63144
314-968-1105 (w)

PETALPUSHER, EDITOR

Betty Walters
413-B Hanna Road
Ballwin, MO 63021
636-527-4194
bettyluvsinsects@yahoo.com

DISTRIBUTION MGR.

Nathan Pate
1148 Fairview Dr.
Ballwin, MO 63011-2225
JKNP@att.net

EDITORIAL COMM.

David Castaner
Paul Redfearn
Tim Smith
Stephen L. Timme

CHAPTER REPRESENTATIVES COLUMBIA

Pam Haverland
(see board members)

JEFFERSON CITY

Ann Grotjan
59110 Redbud Rd.
California, MO 65018
573-796-4478

KANSAS CITY

Daniel Rice
815 W. 31st St.
Independence, MO 64055
816-461-0206
Drice95875@aol.com

OSAGE PLAINS

Beth Walker
106 E Clinton St.
Clinton, MO 64735-2124
660-885-5877
bcwalker012@earthlink.net

ST. LOUIS

Nels Holmberg
530 W. Whiskey Creek Rd.
Washington, MO 63090
636-583-4551
nholmbrg@fidnet.com