

November - December 1996

Vol. 11, No. 6

# Missouri Native Plant Society

## November

- 5            Tue., 7:00 PM            **Tallgrass Prairie and Prairie Restoration** program presented by Bill Davit. Bill has been responsible for the development of the experimental prairie at Missouri Botanical Garden's Shaw Arboretum in Gray Summit. Monthly meeting at Runge Nature Center.  
Jefferson City
- 9            Sat., 10:00 AM            **Nature Walk** led by MONPS members at Runge Conservation Nature Center.  
Jefferson City
- 11           Mon., 7:00 PM            **Using Native Plants of Missouri for Medicinal Purposes** program presented by Sylvia Forbes. Monthly meeting held at the Midwest Science Center, 4200 New Haven Road.  
Columbia
- 13           Wed., 7:30 PM            **Plants & Man in Pre-Columbian Missouri: Human Resource Use over Eleven Thousand Years** program presented by Dr. Alan T. Whittemore, Assistant Curator for Flora of North America. WGNSS monthly meeting held at Powder Valley Nature Center.  
St. Louis
- 20           Wed., 7:00 PM            **Greeting Cards from Pressed Flowers.** Bob Mabes will teach us how to make them. Hewill bring material for each of us to make 2 cards and teach us how to do it. There will be a charge of \$5.00 each for materials. A short business meeting precedes the program. Monthly meeting at Loose Park Garden Center, Wornall at 51st.  
Kansas City

## December

- 5            **Due date for material for January-February *Petal Pusher*.** Please send meeting and field trip information and articles (typed double-spaced) to the editor by this date. If article has been word processed on a Macintosh, please send copy on disk to Pat Harris. Disk will be returned. Or send e-mail to: pharris@stlnet.com
- 7            Sat., 9:00 AM-5:00 PM    **MONPS State Board Meeting** at the Midwest Science Center in Columbia.  
Columbia                    See article on page 3 for details.
- 12           Thur., 6:00 PM            **Dinner & Meeting** held jointly with River Bluffs Audubon Society. Dinner at 6:00 PM. Slide show and book signing by photographer Frank Oberle on his recent photographic topics of prairies and eagles at 7:00 PM.  
Jefferson City
- 14           Sat., 10:00 AM            **Nature Walk** led by MONPS members at Runge Conservation Nature Center.  
Jefferson City

**Vote YES on Amendment 8**  
November 5, 1996  
**Parks and Soils for Today and Tomorrow**

## Confession: Good for the Soul?

by Marlene Miller

To start a paragraph with, "I have a confession to make" sounds like the beginning of something juicy, doesn't it? Sorry, that is hardly what I have in mind. However, a confession is forthcoming. I'm not a **true blue** native plant person. Now you have it right up front. I do not have a "wild" yard (at least not on purpose) and I tend to pull up things that grow in places where I don't plant them. What's more, so does my husband. In fact, he is out working around the farm with the "weed eater" as I write this. Now the question becomes, how did I become a member of MONPS and why am I writing this little column?

When I went to the first meeting of the Osage Plains Chapter, I went out of curiosity. Anytime the word plant is used I get curious. As a child, I was a woods walker and I raised my own children the same way. While I have always known and recognized certain "wild" plants, first in my native Ohio and then in my adopted Missouri, my knowledge rarely went beyond touching, smelling, taking pictures, and using a simple identification book for common names. As I have grown older, I seem to have a greater depth of curiosity.

After a little over a year of exposure to "native plant people," I have found some strange things happening in my own yard and gardens. I have a *patch* of *wildflowers*, not all natives, but getting more so. I have butterfly weed in two of my perennial beds that I planted there *on purpose*. A friend stopped by the other day to cut some flowers for drying and as we went along looking at various flower and herb beds, I found myself frequently saying things like, "I don't know what that is, but it grew there by itself and I think it looks great so I let it alone." Since she knows my penchant for pulling up things that I can't identify, she quickly understood that she was beholding a change in my character. I even find myself telling my husband about the beautiful little flower on a particular plant, even as I'm pulling handfuls of them from the raised beds.

Now, I must explain my husband a little, as well. He is a teacher that I believe is also a frustrated truck gardener. Even though both of our kids have left home and live out of state, he still plants these huge gardens (55-60 tomato plants). He not only pulls or tills "weeds," sometimes, he eradicates my flowers as well. In his own way, he too is being influenced. He belongs to the **Seed Savers** and now raises heritage plants, especially tomatoes which he raises from seeds in our sunshed or the school greenhouse. I know those may not be natives, but it's a lot closer than hybrids. He left a portion of the lane un-mowed for awhile so that I could enjoy the tickseed and goldenrod a little longer. He helped me burn my wildflower patch this last February. The other day, he came in the house with seed pods from butterfly weed from the field before it was mowed for hay. We know they are hard to start, but along with the tomatoes, there will be a flat of butterfly weed in the sunshed. Who knows, there still may be such a thing as

beginner's luck. He's also learned not to pull *anything* from my flower beds.

Our son was married this past July. I did the corsages, flower arrangements, and the bridal bouquet. They were cut in Missouri and taken to Florida in our pickup in coolers and buckets surrounded with ice. What do you think was in some of those buckets? There were pale purple coneflowers for one thing. But Queen Anne's lace found its way into the center of the bridal bouquet with the white rose. It's always been our son's favorite wild flower.

I guess you could say we are being nativefied (I think I just made a new word.) I wonder what next year will bring. Stay tuned.

## Welcome to New Members

We're happy to welcome these new members to the Missouri Native Plant Society. We hope you will join us soon at some of our upcoming field trips and meetings.

Margaret E. Bahe, St. Louis  
J. Barkha Bullin, St. Louis  
Rose Jansen, Bonnots Mill  
Larry L. Limpus, Amsterdam  
Maureen McHale, Kirksville  
Wanda Schlotz, Jefferson City  
Courtney Shands, Jr. St. Louis  
Gary L. Smith, Jefferson City



Drawing by  
Jim Ziebol

## Field Trip Ideas for 1997

Where's your favorite place to go to look for wildflowers? What special place do you like to go to in the Spring? What summery slopes have the best flowers in June? And in Fall, where's the best place for asters? Help members get to know your part of Missouri better. If you have any ideas of where you would like MONPS to visit on the field trips associated with the Quarterly Board Meetings, contact an officer or board member. (See list on back page.)

## Native Gardens Sought

Garden writers Sally and Andy Wasowski (*Requiem for a Lawnmower, Native Gardens for Dry Climates*, etc.) are working on a new book tentatively titled *Native Gardens for the Prairie States* (University of Minnesota Press). They'll be traveling throughout the Midwest and into Canada this spring and summer and are on the lookout for photogenic landscapes. These may be residential or commercial, and should be composed of at least 50% indigenous plant materials. A brief description and, if possible, a few non-returnable photos would be appreciated. Contact the Wasowskis at: PO Box 607, Arroyo Seco, NM 87514, or call them at (505) 776-1499 (after Nov. 1st).

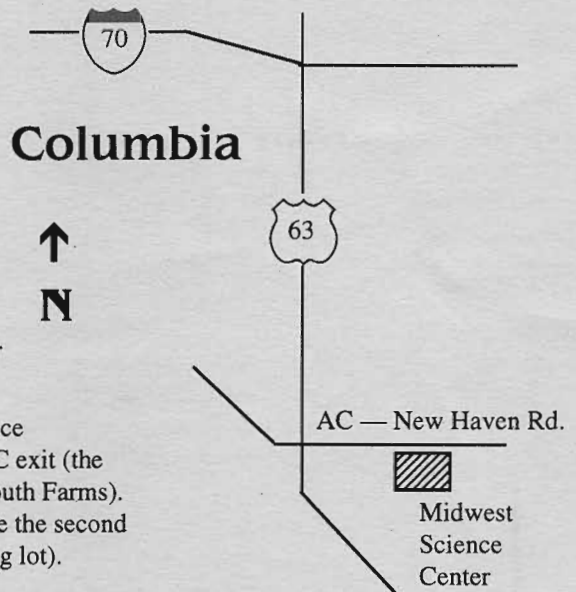


## December Board Meeting COLUMBIA, MO — DECEMBER 7, 1996

All Missouri Native Plant Society members are invited to attend the winter MONPS State board meeting. Join us to plan the meeting and field trip schedule for 1997. If you have an area or special place you think we should visit next year, join us at this planning meeting. Or you can contact an officer or board member, who is listed on the back page of the newsletter and let them know of your ideas.

This will be an all day business meeting. It will start at 9:00 A.M. and end by 5:00 P.M. We will order lunch to be delivered, so bring money to pay for your share, or if you wish, you may bring your lunch. If we finish early, an optional short field trip is planned.

We will be meeting in the Conference Building at the Midwest Science Center, 4200 New Haven Rd., Columbia, MO. From Hwy 63, take the AC exit (the southern most Columbia exit), drive east about 1 mile (past University South Farms). The Midwest Science Center is on the southside of New Haven Road. Use the second driveway to get to the Conference Building (on the east side of the parking lot).



## Free "Steyermark" Available!

by George Yatskievych

Stan Hudson, a long-time member of MONPS from Poplar Bluff, has recently left the state for beautiful Witchita, Kansas. In packing up his treasures and other belongings, he has decided to find a new home for his spare copy of Steyermark's *Flora of Missouri*, which is used, but in very good condition. Stan has asked MONPS to take charge of this adoption service. His instructions are that the book should go to a deserving student who is studying some aspect of Missouri botany and might not otherwise be able to afford a copy of this expensive book.

Students (high school, undergraduate, or graduate) or their teachers or professors may apply to receive this book by sending a short letter stating the student's interest in the flora of Missouri and what aspects of the flora the student is studying. There is only one copy, and competition is likely to be fierce. Send letters by December 1, 1996, to George Yatskievych, Missouri Botanical Garden, P.O. Box 299, St. Louis, MO 63166-0299. The winner will be announced in the next issue of *Petal Pusher*.



Drawing by  
Jim Ziebol



## Taxonomic

*Whatever happened to Smilacina,  
A name that I long knew well?  
Has it been sent to that far-off place  
Where all the lost names dwell?  
There to drift in limbo and await that future age  
When some botanist's paper  
will bring it back on stage.  
And if that day does happen, later botanists will say,  
"Whatthell is Smilacina? I never heard that name.  
I grew up with old Maianthemum;  
why should it have to change?"*

*But change occurs.  
Old books are littered  
with names that have passed away.  
Some may be gone, but others rest,  
to be seen at a later day,  
While some remain in italics or even parentheses.  
It depends upon the authors and what  
the authors please.*

Stan Hudson, Poplar Bluff

## Chapter News

**Hawthorn Chapter** — At the August meeting a report of the field trip to the Paris Fork Church area was given. The area was very interesting botanically. Also reported on was a Boone County Commission meeting where a possible weed ordinance was discussed. An ordinance such as this could have ramifications for those with prize native landscapes.

The August program was given by George Yatskievych of the Missouri Botanical Garden, who gave a fascinating glimpse of his work's complexity as he revises Steyermark's Flora of Missouri. He covered the saga of several introduced species and moved on to identify some of the avenues in which new species are found and placed as official species within Missouri.

Prior to the September meeting, a field trip led by Bill Dierker along the Katy Trail was conducted and somewhere between 40 to 60 flowering plants were identified. Several days later the monthly meeting was held at Kiwanis Park. Dr. Alan Rebertus with the University of Missouri School of Natural Resources used the park to demonstrate some of the changes taking place in the woodlands of our region and some of the problems caused by fragmentation and urbanization. Succession was discussed with the loss of the white oak component commonly reported by historical government surveys to a strong red oak component that is now falling out and expected to be replaced by sugar maple. In addition to the program the slate of nominations for new officers for the chapter was announced to be voted on at the October meeting.

**Jefferson City** — We had an introductory meeting in September. Member Lanny Strickfaden let us use his excellent slide show on wildflowers. We gained 2 new members.

Also in September, we had a beautiful day for a wildflower walk at Runge Nature Center. Later in the month, Ann Wakeman led a tour at her business, Rockpost Wildflowers, near Fulton.

We are still without a President and Vice-president. Secretary Carol Young has agreed to produce our newsletter.

**Kansas City** — We have been very active this summer. Field trips have included: two trips to River Bluff Park where we are continuing our inventory of plants for the Jackson County Parks Department; an after work trip to Hidden Valley Park which contains a State Natural Area; and to Taberville Prairie to see the summer flora.

We have also had excellent speakers at our monthly meetings including: Pat Whalen, Naturalist at Burr Oak Woods; Urban Forester Jerry Monterastelli; Dr. Norlan Henderson, Professor Emeritus at UMKC; and Nic Natarella, Teacher at East Ag Magnet School in Kansas City. Upcoming events include a field trip to Maple Woods Park in conjunction with Comuniversy, and speakers Dr. Craig Freeman of KU and Bob Mabes of the Kansas Wildflower Society. If anyone is interested in learning more about these events,

please call Dan Rice at 1-816-461-0206 or Ed O'Donnell at 1-816-531-4692.

**Osage Plains** — At our July and August meetings slides were shown by C. F. Eaglesfield. Tentative plans were made for the Fall Board meeting which we will be hosting in Clinton.

In September, plans were finalized for the Fall Board Meeting. C. F. Eaglesfield and Judy Rogers will present slides. Refreshments are planned for a 7:00 p.m. sharing time prior to the welcoming program on Friday night. Herbarium specimens of C. F. Eaglesfield will be available for viewing. Packets from the Clinton Chamber of Commerce are ready. Seeds from Sharp Brothers and some handouts from the Missouri Department of Conservation are also planned.

During each of our meetings members brought plants for identification or interesting plants to share. C. F. Eaglesfield's slides from field trips all summer were magnificent and thoroughly enjoyed by all.

C. F. Eaglesfield led field trips every Saturday that the weather permitted throughout the summer. Several were to area prairies and Lichen Glade. We also had the privilege of exploring several private lands in the area including one virgin area. We have had a relatively mild summer with much rain (Kansas City now says 33 inches) and that has affected the amounts and kinds of plants seen this year.

We thank all of you for participating in the Fall Board Meeting and field trips and hope we have been good hosts and you have had a pleasant time.

**St. Louis** — The St. Louis chapter has had a busy summer with a full slate of field trips, programs, and activities:

On June 15 we searched successfully for *Spigelia marilandica* in St. Joe State Park. Our trip to St. Francis State Park on June 29 to view *Filipendula rubra* was well attended, and although the Queen was not in bloom, we were rewarded with a large number of beautiful Grass Pink Orchids. In July, Pat Grace led the annual safari to Bismarck Lake to see the Purple Fringeless Orchid, and a small number of hardy souls braved the rain to travel to Wegener Woods.

Our programs for the summer included Robert Marquis in June, speaking on the Roles of Birds in Missouri Ozark Forest Ecosystems. In July, James Trager, naturalist at the Shaw Arboretum, gave us an overview of the continuing development of the new wetland area. George Yatskievych provided the program in August and gave us an update on the new additions to the flora since Steyermark's 1963 publication. The increase in total number of species is only part of the story. He also had some interesting observations on the distribution and movement of species into the state as well as a shift in the ratio of native to non-native species.

In September our chapter participated in the Native Plant Conference, Prairie Days at Shaw Arboretum and the EcoFair at Monsanto's Chesterfield Campus. Enjoy the fall colors!



Drawing by Jim Ziebol



## Quarterly Board Meeting Highlights

SEPTEMBER 21, 1996

President Larry Morrison, 13 board members and several guests met at the Clinton Vocational School, in Clinton Missouri. Larry thanked the Osage Plains Committee for the arrangements and hospitality for the great weekend.

Treasurer Jack Harris reported a balance of \$10,067.00. Current mailing list status is 361.

### Committee Reports

Atlas of Missouri Flora: Wally Weber presented a brief history of the Atlas and explained how it has evolved over the years. It was moved, seconded and carried (MSC) that there would be an ad placed in the Petal Pusher prior to publication of the Atlas. 25 copies more than ordered would be printed. The price, to be determined, will pay for the cost of printing, plus shipping & handling with no cost or profit for the Society.

Editorial/Missouriensis: George Yatskievych reported that there would be a combined issue of Vol. 1 and 2 printed this year. At the December meeting, plan to address the future format of the Missouriensis.

Environment/Education: Parks & Soils: 1) The campaign has moved to the voter education phase. It was MSC to contribute \$300.00 to the Parks & Soils campaign to help with publicity to support a "Yes" vote in November. 2) Jim Bogler wrote a letter from the Society in opposition to development of an additional power line through Hickory Canyons Natural Area. UE has selected a route that would by-pass the Hickory Canyons Natural Area and also avoid high quality buffer areas of the Canyons. It was MSC to write a letter to UE expressing appreciation for this decision.

Membership: Pat Grace reported we had sold all of the T-shirts. Kansas City had 2 left. There are plenty of bandanas remaining.

Publicity: Nels Holmberg reported we can send photos along with our meeting notices to the local newspapers. Black and white are preferred. If anyone has any they would like to donate, contact Nels. (See address on back page.)

### Old Business

Badge Program: Jim Bogler reported that Lynda Richards graded the first submission and the patch has been sent.

Regional Sources of Native Plants Handout: A committee was appointed to set criteria. Those on the committee are Sue Hollis, Nels Holmberg and Dan Rice.

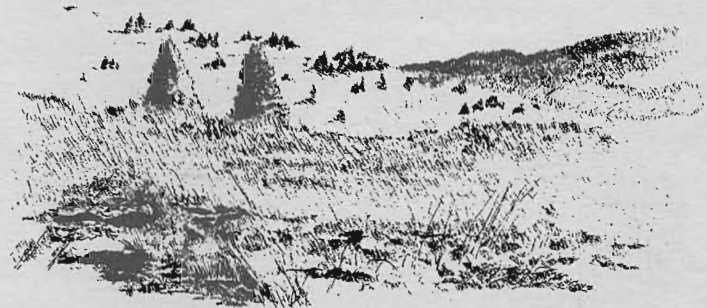
### New Business

E-mail Directory: Larry Morrison offered to compile a directory of members e-mail addresses. If you have one and would like to have it included, please send it along with your name to Larry. (See address on back page.)

"Steyermark" Donation: Stan Hudson will be leaving Poplar Bluff and moving to Wichita, Kansas. He is donating his extra copy of the *Flora of Missouri* to be given to a student who is doing studies on the flora of Missouri. It was

MSC to put a notice in the next Petal Pusher announcing this copy is available. Letters will be accepted and they will be reviewed at our December meeting. (See article on page 3.)

Internet Home Page: MONPS will be designing a home page for the Internet. Bring ideas of what you would like to see on it to the December meeting.



Drawing by Jim Ziebol

## MONPS: Clinton Weekend

SEPTEMBER 20-22

Friday evening: About 30 members gathered at the Clinton Vocational School. C. F. Eaglesfield had his herbarium specimens of the local region on display in one of the classrooms. In another classroom slides were presented by C. F. Eaglesfield, Pat Grace, Nels Holmberg, Judith Rogers of Sharp Brothers, and Bruce Schuette. Cookies and conversation rounded out the evening.

On Saturday these areas were visited:

1) Lichen Glade where we saw golden aster (*Chrysopsis pilosa*), nits and lice (*Hypericum drummondii*), rough-stemmed gerardia (*Agalinis gattingeri*), goldenrod (*Solidago petiolaris*) and common ladies' tresses (*Spiranthes cernua*).

2) In a flood plain along the Truman Reservoir we saw false starwort (*Boltonia asteroides*), toothcup (*Ammannia coccinea*), sawtooth sunflower (*Helianthus grosseserratus*) and a large area of common sunflower cultivars (*H. annuus*).

3) At the Connor O. Fewel WA there were blue cardinal flower (*Lobelia siphilitica*), sensitive fern (*Onoclea sensibilis*), northern maidenhair fern, (*Adiantum pedatum*) and a big patch of lizard tail (*Saururus cernuus*) in seed.

A Sunday morning trip was to Rock Hill Prairie. The prairie goldenrod (*Solidago speciosa*) was spectacular. Also blooming were downy gentian (*Gentiana puberulenta*), Great Plains ladies' tresses (*Spiranthes magnicamporum*), blue sage (*Salvia azurea*) and willow-leaved aster (*Aster praealtus*).

Many thanks to the Osage Plains Group. They were most gracious hosts. The field trips were just a sample of the variety of habitats in their area. The refreshments were delightful. Such wonderful cookies. Mmmmmmm.

Thanks again for all the work and preparation to make it a great weekend.

## Missouri Native Plant Society — Publication Order Form

MONPS is pleased to offer a selection of books to members at discounted prices. Check the books below you desire to order. Each order form must be accompanied with cash or check for total cost of books, including shipping and handling.



Drawing by  
Jim Ziebol

_____	Edible Wild Plants of the Prairie — Kindscher .....	\$11.25
_____	Medicinal Wild Plants of the Prairie — Kindscher .....	\$11.25
_____	Walking with Wildflowers — Haller .....	\$22.50
_____	Konza Prairie — Reichman .....	\$11.25
_____	Roadside Kansas — Buchanan & McCauley .....	\$8.50
_____	Flora of the Great Plains — GP Flora Committee .....	\$47.00
_____	Field Guide to the Common Weeds of Kansas — Barkley .....	\$6.90
_____	Poisonous Plants of the Central U.S. — Stephens .....	\$11.25
_____	Woody Plants of the North Central Plains — Stephens .....	\$25.50
_____	Wildflowers & Weeds of Kansas — Bare .....	\$25.50
_____	Roadside Wildflowers of the S. Great Plains — Freeman & Schofield .....	\$15.50
_____	Trees, Shrubs, & Woody Vines of Kansas — Stephens .....	\$8.50
_____	Gardening in the Heartland — Snyder .....	\$17.00
_____	Guide to Kansas Mushrooms — Horn, et al .....	\$17.00
_____	Watching Kansas Wildlife — Gress & Potts .....	\$8.50
_____	Growing Vegetables in the Great Plains .....	\$11.25
_____	Kansas Wetlands — Collins .....	\$21.50
_____	Wildflowers of Mississippi — Timme .....	\$19.50
_____	Kansas Prairie Wildflowers — Owensby .....	\$11.95
_____	Wildflowers of Nebraska & the Southern Great Plains — Farrar .....	\$15.50
_____	Colorado Flora: Eastern Slope — Weber .....	\$25.00
_____	Colorado Flora: Western Slope — Weber .....	\$25.00

Make checks payable to: T.M. Sperry Herbarium

Send order form to: Dr. Stephen L. Timme  
T.M. Sperry Herbarium — Biology  
Pittsburg State University  
Pittsburg, KS 66762-7552

Check the above books you wish to purchase and complete below:

Subtotal	\$ _____
Shipping & Handling	\$ _____
(\$3.00 first book, each additional book = \$0.50)	
Total	\$ _____

Name (please print) \_\_\_\_\_  
 Address \_\_\_\_\_  
 City \_\_\_\_\_ State \_\_\_\_\_ Zip \_\_\_\_\_  
 Phone ( \_\_\_\_\_ ) \_\_\_\_\_

**Order Sent to  
 Publisher Around  
 15th of Each Month**

### Publications of Interest

*Missouri Orchids*, Bill Summers. 3rd Edition, 1996. Missouri Department of Conservation, Natural History Series, No. 1. paperback. \$5.00. This compact (112 pages) volume is packed with just what Missouri Orchid aficionados were waiting for. Current taxonomic nomenclature, distribution maps, text and greatly improved quality of photo (38) reproduction. An update on the status of our knowledge about Missouri Orchids around the state. **NEW!**

*Directory of Missouri Natural Areas*. 1996. Missouri Natural Areas Committee: Missouri Department of Conservation, Missouri Department of Natural Resources, U.S. Forest Service, U.S. National Park Service. 155 pages. Paperback. An update on the status, location, and synopsis of what is to

be found/seen at each of Missouri's really, really special, natural areas all across the state. Available free by writing to Missouri Department of Conservation, P.O. Box 180, Jefferson City, MO, 65102-0180. **NEW!**

*Public Prairies of Missouri*. 1994. Thomas E. Toney. Missouri Department of Conservation. 30 pages. Paperback. Similar to the Natural Areas Directory but contains descriptions of prairies only, some of which may also be Natural Areas. Includes areas owned/managed by The Nature Conservancy, The Missouri Prairie Foundation, The University of Missouri Botany Department, and the Missouri Department of Natural Resources, State Parks Division. Also available free by writing to Missouri Department of Conservation (see above).

Missouri Native Plant Society

RENEWAL NOTICE

Dear MONPS member:

Membership renewals for 1997 are due Jan 1. Your prompt response will be appreciated and will save the Society the cost of mailing reminders. There are two membership levels available: (1) Society (state wide) membership is required, and benefits include Society publications, meetings, field trips and discounts; (2) Chapter membership is optional and provides additional benefits on a local, regional level. Chapters may schedule field trips, meetings, publish newsletters and engage in other locally oriented activities.

For New Members Only: If you joined July 1, 1996 or later you are paid up until December 31, 1997. Check the expiration date on your mailing label.

WHERE TO SEND YOUR DUES

Society and Chapter memberships should be sent to: Jack H. Harris, Treasurer MONPS, 9708 Green Park Road, St. Louis, MO 63123



Or Chapter dues may be sent to:

Jefferson City Chapter: Joan Domke, 8945 County Rd. 431, New Bloomfield, MO 65063

St. Louis Chapter: Catherine Filla, 5560 Arthur, St. Louis, MO 63139

Hawthorn Chapter: Paula Peters, 2216 Grace Ellen Drive, Columbia, MO 65202-1745

Springfield Chapter: David Stokely, 2126 State Hwy P, Billings, MO 65610



Kansas City: George W. Scheil, 7311 Ditzler, Raytown, MO 64133

Scissors icon and dashed line. Name: \_\_\_\_\_ Address: \_\_\_\_\_ City/State/Zip: \_\_\_\_\_ Phone: \_\_\_\_\_ (H) \_\_\_\_\_ (W)

Society Membership Categories/Dues

\_\_\_\_\_ \$9.00 Regular \_\_\_\_\_ \$5.00 Student \_\_\_\_\_ \$20.00 Family/Contributing
\_\_\_\_\_ \$25.00 Affiliate \_\_\_\_\_ \$200.00 Life

Chapter Dues(add to Society dues)

\_\_\_\_\_ \$6.00 Hawthorn (Columbia) \_\_\_\_\_ \$0.00 Osage Plains
\_\_\_\_\_ \$5.00 Jefferson City \_\_\_\_\_ \$0.00 Ozark Showy (Mtn. View area)
\_\_\_\_\_ \$0.00 Kirksville \_\_\_\_\_ \$5.00 St. Louis
\_\_\_\_\_ \$5.00 Kansas City \_\_\_\_\_ \$5.00 Springfield



Vol. 11 #6  
November – December 1996

**VOTE YES ON AMENDMENT 8  
PARKS & SOILS**

**Missouri Native Plant Society  
P.O. Box 20073  
St. Louis, MO 63144-0073**

**FORWARD AND  
ADDRESS CORRECTION**

---

**Inside This Issue**

- Winter Board Meeting
  - Dues Renewal Notice
  - Publication Order Form
- 

Non-Profit  
Organization  
U.S. Postage  
PAID  
St. Louis, MO  
Permit No. 1720

**Missouri Native Plant Society Officers and Board Members**

**PRESIDENT**

Larry Morrison  
110 Virginia Ave.  
O'Fallon, IL 62269-2446  
618-624-5964  
Morrison@afca.safb.af.mil

**VICE-PRESIDENT**

Jim Bogler  
7916 Col. Dent Dr.  
St. Louis, MO 63123  
314-842-0111

**SECRETARY**

(Vacant)

**TREASURER**

Jack Harris  
9708 Green Park Rd.  
St. Louis, MO 63123  
314-894-9021  
jahar@stlnet.com

**IMMEDIATE PAST  
PRESIDENT**

Stephen L. Timme  
T.M. Sperry Herbarium  
Pittsburg State Univ.  
Pittsburg, KS 66762  
316-235-4740 (w)  
slt@mail.pittstate.edu  
FAX: (316) 235-4194

**BOARD MEMBERS**

Jody Eberly ('95-'98)  
Rt. 2, Box 2740  
Mtn. View, MO 65548  
417-934-2759

Pam Haverland ('96-'99)  
6901 Ginlet Lane  
Columbia, MO 65201  
573-443-2189

Robin Kennedy ('96-'99)  
300 Westwood Ave.  
Columbia, MO 65203  
573-443-5625  
rkennedy@

biosci.mbp.missouri.edu

Lynda Richards ('94-'97)  
HCR 35, Box 263  
Rolla, MO 65401-8604  
573-341-7433 (w)

Bruce Schuette ('95-'98)  
Rt. 1, Box 223-C  
Troy, MO 63379  
314-528-7247 (w)

Tim Smith ('94-'97)  
1704 W. Main  
Jefferson City, MO 65109  
573-635-8085 (h)

**ARCHIVES**

Jim Bogler  
(see officers)

**ENV. AND EDUC.**

Jack H. Harris  
(see officers)

**FIELD TRIPS**

Stephen L. Timme  
(see officers)

**MEMBERSHIP**

Pat Grace  
30 N. Iola  
Webster Groves, MO 63119  
314-961-2511

**PUBLICITY**

Nels Holmberg  
7672 Whiskey Creek Rd.  
Washington, MO 63090  
314-583-4551  
FAX: (314) 362-4955

**EDITORIAL COMM.**

David Castaner  
Sylvia Forbes  
Donna Ford  
Paul Redfearn

**MO FLORA ATLAS, ED.**

Wallace Weber  
Dept. of Biology  
Southwest MO State Univ.  
Springfield, MO 65804  
417-836-5883 (w)

**MISSOURIENSIS,**

**CO-EDITORS**

George Yatskievych  
MO Botanical Garden  
P.O. Box 299  
St. Louis, MO 63166  
314-577-9522 (w)  
gyatskievych@lehmann.mobot.org

Doug Ladd  
The Nature Conservancy  
2800 S. Brentwood Blvd.  
St. Louis, MO 63144  
314-968-1105 (w)

**PETAL PUSHER,**

**CO-EDITORS**

Carl Darigo  
553 Mapleview  
University City, MO 63130  
314-863-7057  
carl.darigo@slug.org

Pat Harris  
9708 Green Park Rd.  
St. Louis, MO 63123  
314-894-9021  
pharris@stlnet.com

**CHAPTER  
REPRESENTATIVES**

**COLUMBIA**  
Larry Mechlin  
Rt 5, 3600 Fredrick Ct  
Columbia, MO 65202  
573-445-6055

**JEFFERSON CITY**

Ann Grotjan  
RR 2 Box 2894  
California, MO 65018  
573-796-4478

**KANSAS CITY**

Daniel Rice  
815 W. 31st St.  
Independence, MO 64055  
816-461-0206

**KIRKSVILLE**

(Vacant)

**OSAGE PLAINS**

Marlene Miller  
949 NE Hwy C  
Calhoun, MO 65323  
816-694-3581

**OSARK SHOWY**

Jody Eberly  
(see board members)

**ST. LOUIS**

John Oliver  
4861 Gatesbury Dr.  
St. Louis, MO 63128  
314-487-5924  
oliver@  
charles.lindbergh.k12.mo.us

**SPRINGFIELD**

Richard Datema  
Rt. 7, Box 411  
Springfield, MO 65802  
417-862-9727